



NEW

PolyTitan Resin for LCD DLP SLA 405nm Black 500g

[Read More](#)

SKU: 3DWQTS9D2R985

Price: 354.55 DH (HT)

Stock: instock

Categories: [Engineering Resins](#), [Functional Resins](#), [Professional Resins](#)

Product Description

Polypropylene like 3D printer resin is with 736 J/m impact strength, supper strong and scratch resistance. Scratch resistance

Great tenacity than polypropylene like

Similar to PP property

Great tactile for part like handle



736 J/M Impact Strength

Best high tenacity 3D printing resin. Scratch resistance. Great tenacity than polypropylene like. Similar to PP property. Great tactile for part like handle. Supper strong and scratch resistance.



NEW

PolyTitan Resin for LCD DLP SLA 405nm Grey 500g

[Read More](#)

SKU: 3DWQECK71ZAX1

Price: 354.55 DH (HT)

Stock: instock

Categories: [Engineering Resins](#), [Functional Resins](#), [Professional Resins](#)

Product Description

Polypropylene like 3D printer resin is with 736 J/m impact strength, supper strong and scratch resistance. Scratch resistance

Great tenacity than polypropylene like

Similar to PP property

Great tactile for part like handle



736 J/M Impact Strength

Best high tenacity 3D printing resin. Scratch resistance. Great tenacity than polypropylene like. Similar to PP property. Great tactile for part like handle. Supper strong and scratch resistance.



NEW

PolyTitan Resin for LCD DLP SLA 405nm White 500g

[Read More](#)

SKU: 3DWFJH6T6F1TT

Price: 354.55 DH (HT)

Stock: instock

Categories: [Engineering Resins](#), [Functional Resins](#), [Professional Resins](#)

Product Description

Polypropylene like 3D printer resin is with 736 J/m impact strength, supper strong and scratch resistance. Scratch resistance

Great tenacity than polypropylene like

Similar to PP property

Great tactile for part like handle



736 J/M Impact Strength

Best high tenacity 3D printing resin. Scratch resistance. Great tenacity than polypropylene like. Similar to PP property. Great tactile for part like handle. Supper strong and scratch resistance.



NEW

SolidEdge Resin for LCD DLP SLA 405nm Grey 1000g

[Read More](#)

SKU: 3DWIN56676S60

Price: 571.82 DH (HT)

Stock: instock

Categories: [Engineering Resins](#), [Resins](#)

Product Description

High-Performance Engineering Resin Designed for precision, durability, and versatility, our 3D printing resin offers unparalleled properties for industrial and engineering applications.

Key Features:

- **Drillable & Scratch Resistant:** Ensures long-lasting and robust prints for demanding environments.
- **Low Viscosity & Low Shrinkage:** Achieves high precision and dimensional accuracy in every print.
- **High Strength & Durability:** Exceptional resistance to impact and deformation, suitable for structural testing and prototyping.
- **Excellent Surface Finish:** Produces smooth, detailed prototypes ideal for product design and verification.
- **Anti-Scratch Properties:** Maintains surface integrity even under challenging conditions.

Applications:

Perfect for:

- Industrial prototyping
- Structural and product testing
- High-precision engineering designs

This resin combines the best of strength, hardness, and scratch resistance, setting a new standard for 3D printing materials. **Precautions:**

1. Fully shaking before usage, shake like up side down will be better.
 2. Please Wear gloves and mask during whole print process to avoid skin contact directly, if you get the resin on your skin unfortunately, please wash with water immediately until clean it up.
 3. Resin is one kind of speical chemisty product, please keep away from children, sunlight shining and dust.
 4. Brush it gently with a soft brush when model complete, and dry it up with cool wind, these steps will let you get the model in better condition
-



NEW

SolidEdge Resin for LCD DLP SLA 405nm White 1000g

[Read More](#)**SKU:** 3DWTLV8I5B4D4**Price:** 571.82 DH (HT)**Stock:** instock**Categories:** [Engineering Resins](#), [Resins](#)

Product Description

High-Performance Engineering Resin Designed for precision, durability, and versatility, our 3D printing resin offers unparalleled properties for industrial and engineering applications.

Key Features:

- **Drillable & Scratch Resistant:** Ensures long-lasting and robust prints for demanding environments.
- **Low Viscosity & Low Shrinkage:** Achieves high precision and dimensional accuracy in every print.
- **High Strength & Durability:** Exceptional resistance to impact and deformation, suitable for structural testing and prototyping.
- **Excellent Surface Finish:** Produces smooth, detailed prototypes ideal for product design and verification.
- **Anti-Scratch Properties:** Maintains surface integrity even under challenging conditions.

Applications:

Perfect for:

- Industrial prototyping
- Structural and product testing
- High-precision engineering designs

This resin combines the best of strength, hardness, and scratch resistance, setting a new standard for 3D printing materials. **Precautions:**

1. Fully shaking before usage, shake like up side down will be better.
2. Please Wear gloves and mask during whole print process to avoid skin contact directly, if you get the resin on your skin unfortunately, please wash with water immediately until clean it up.
3. Resin is one kind of speical chemisty product, please keep away from children, sunlight shining and dust.
4. Brush it gently with a soft brush when model complete, and dry it up with cool wind, these steps will let you get the model in better condition



NEW

SolidEdge Resin for LCD DLP SLA 405nm Black 1000g

[Read More](#)

SKU: 3DW9UZR888S09

Price: 571.82 DH (HT)

Stock: instock

Categories: [Engineering Resins](#), [Resins](#)

Product Description

High-Performance Engineering Resin Designed for precision, durability, and versatility, our 3D printing resin offers unparalleled properties for industrial and engineering applications.

Key Features:

- **Drillable & Scratch Resistant:** Ensures long-lasting and robust prints for demanding environments.
- **Low Viscosity & Low Shrinkage:** Achieves high precision and dimensional accuracy in every print.
- **High Strength & Durability:** Exceptional resistance to impact and deformation, suitable for structural testing and prototyping.
- **Excellent Surface Finish:** Produces smooth, detailed prototypes ideal for product design and verification.

- **Anti-Scratch Properties:** Maintains surface integrity even under challenging conditions.

Applications:

Perfect for:

- Industrial prototyping
- Structural and product testing
- High-precision engineering designs

This resin combines the best of strength, hardness, and scratch resistance, setting a new standard for 3D printing materials. **Precautions:**

1. Fully shaking before usage, shake like up side down will be better.
2. Please Wear gloves and mask during whole print process to avoid skin contact directly, if you get the resin on your skin unfortunately, please wash with water immediately until clean it up.
3. Resin is one kind of speical chemisty product, please keep away from children, sunlight shining and dust.
4. Brush it gently with a soft brush when model complete, and dry it up with cool wind, these steps will let you get the model in better condition

eSun, PA100 Nylon-Like Resin

[Read More](#)

SKU: 3DWJ9HNXP99A

Price: 726.36 DH (HT)

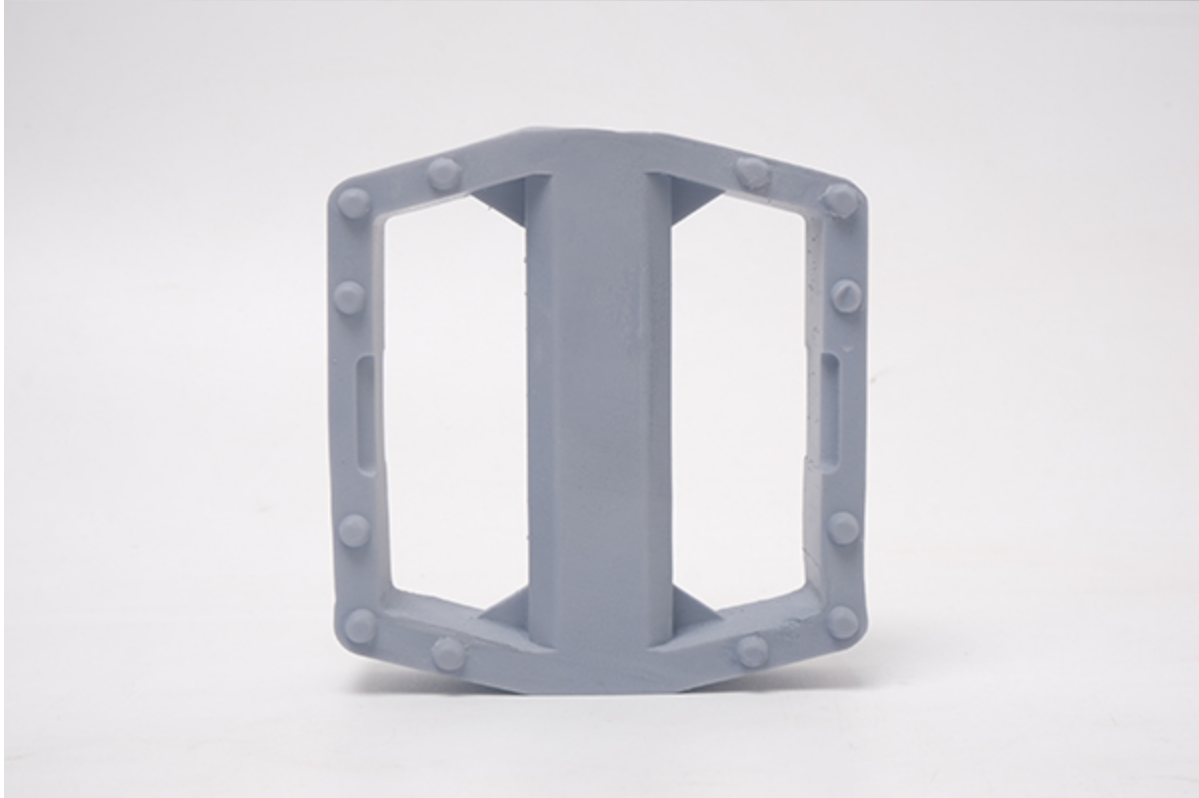
Stock: instock

Categories: [Engineering Resins](#), [Resins](#)



Product Description

Nylon-like resin is a high-strength resin material invented by eSUN for engineering and manufacturing applications.







eSUN



eResin Hard Tough Black 1000ml

[Read More](#)

SKU: 3DW1TX13V664A

Price: 580.91 DH (HT)

Stock: instock

Categories: [Engineering Resins](#)

Product Description

3D Blend Elastic white Resin 500ml



[Read More](#)

SKU: 3DWZ5A8MHJH66

Price: 499.09 DH (HT)

Stock: instock

Categories: [Engineering Resins](#), [Functional Resins](#), [Resins](#)

Tags: [#dental](#)

Product Description



3D Blend High Temperature Mold Resin 500ml

[Read More](#)

SKU: 3DWS3Z7MSC07X

Price: 771.82 DH (HT)

Stock: instock

Categories: [Engineering Resins](#), [Resins](#)

Tags: [#dental](#)

Product Description

Weight: 1kg per bottle Density: 1.17 g/cm³ Viscosity: 160-250 cP Surface Hardness: 80 Shore D
Tensile Stress at Break: 33 MPa Elongation at Break: 2 % Tensile Modulus: 2749 MPa Notched
Izod Impact: 20.2 J/m Max Temperature : 220 °C



3D Blend PolyPropylene Like White 500ml

[Read More](#)

SKU: 3DW26416H9L86

Price: 508.18 DH (HT)

Stock: instock

Categories: [Engineering Resins](#), [Resins](#)

Tags: [#dental](#)

Product Description
